

Note: A "people mover" will be making a 20-minute circuit through the campus with basic stops at Camping, Newton Club, Shoot Field, and Track/Infield.

**Map Legend:**

- 1. PGI Camping
- 2. PGI Parking
- 3. Newton Club
- 4. Afterglow / Biz Mtg (under SE Bleachers)
- 5. Fenced Tents
  - A. Manufacturing
  - B. JPA Tent

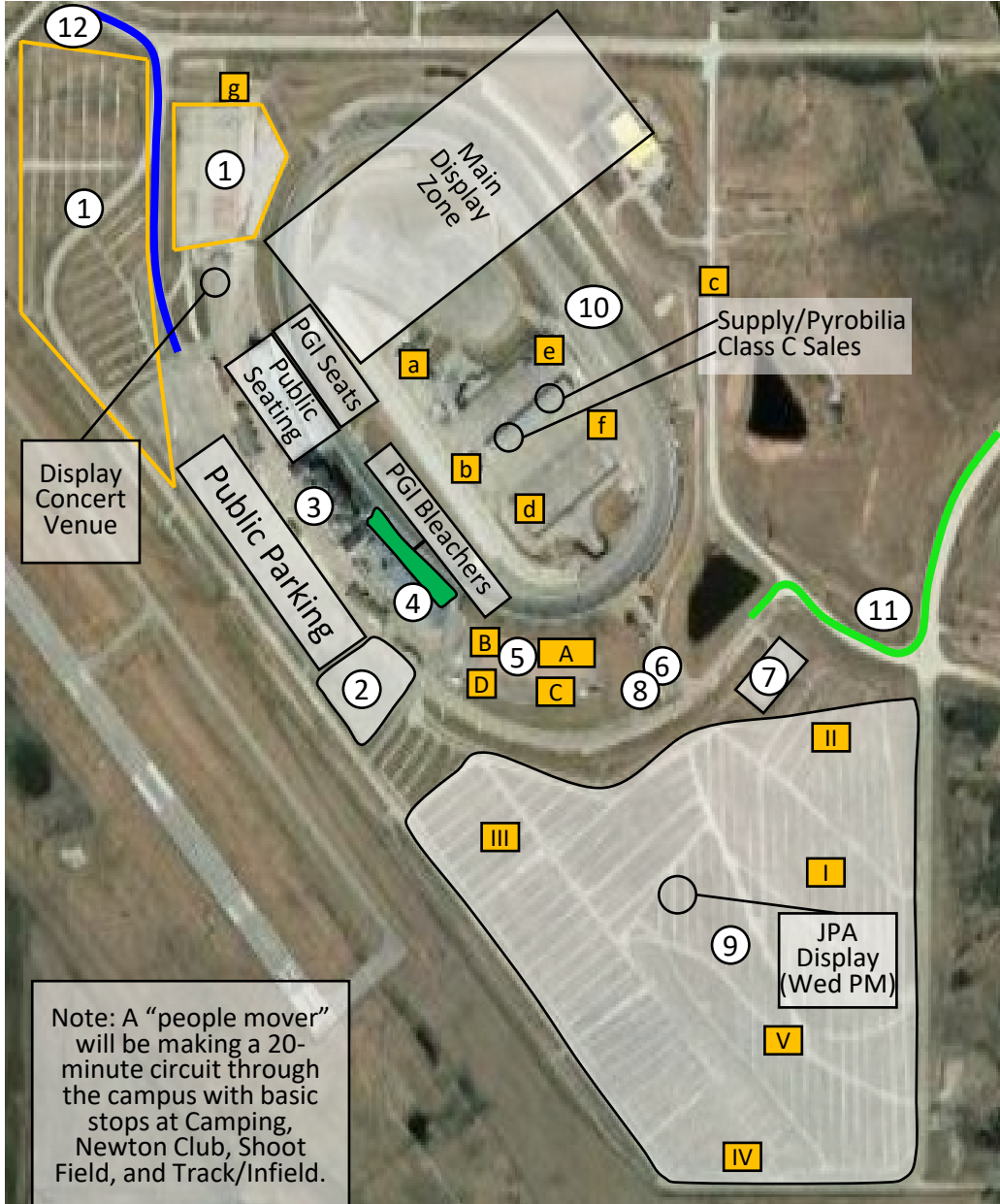
- C. MUM Pyro Tent
- D. Seminar Tent #1
- E. Seminar Tent #2
- 6. PGI Registration (Credentials Building)
- 7. Registration Parking
- 8. Camping Check-in
- 9. Field
  - I. B-Line

- II. Ground Salutes
- III. Magazines
- IV. Rocket Line
- V. Competition
- 10. Track / Infield
  - a. Seminar Main Building Mediacom Center (Xtream Internet Building)
  - b. Tech Center (Live material seminars)

- c. Garage (Supply / Pyrobilia & Class C Sales)
- d. Class C Shoot Area
- e. Fire/Med
- f. Safety
- g. Security
- 11. PGI Entry/Exit (green line)
- 12. Public Entry/Exit (blue line)

**Map Legend:**

- 1. PGI Camping
- 2. PGI Parking
- 3. Newton Club
- 4. Afterglow / Biz Mtg (under SE bleachers)
- 5. Fenced Tents
  - A. Manufacturing (Small Shell)
  - B. JPA Tent
  - C. MUM Pyro Tent
  - D. Seminar Tent #1
- 6. PGI Registration (Credentials Building)
- 7. Registration Parking
- 8. Camping Check-in
- 9. Field
  - I. B-Line
  - II. Ground Salutes
  - III. Magazines
  - IV. Rocket Line
  - V. Competition
- 10. Track / Infield
  - a. Seminar Main Building Mediacom Center (Xtream Internet Building)
  - b. Tech Center (Live material seminars)
  - c. Garage (Supply/Pyrobilia & Class C Sales)
  - d. Class C Shoot Area
  - e. Fire/Med
  - f. Safety
  - g. Security
- 11. PGI Entrance/Exit (green line)
- 12. Public Entrance/Exit (blue line)



Note: A "people mover" will be making a 20-minute circuit through the campus with basic stops at Camping, Newton Club, Shoot Field, and Track/Infield.